

**2012
SERVICE AND
MAINTENANCE GUIDE**



VEHICLE IDENTIFICATION

Vehicle Identification Number (VIN) _____

Delivery Date _____

Warranty Start Date _____

Mileage at Delivery _____

Model Year _____

Selling Dealer _____

Selling Dealer Phone _____

TABLE OF CONTENTS



OWNER'S LITERATURE INFORMATION	2
INTRODUCTION	
NISSAN Maintenance	3
Why NISSAN Service?	4
NISSAN MAINTENANCE & REPAIR SUPPORT	
Extended Service Plans	9
Genuine NISSAN Collision Parts	10
Genuine NISSAN Parts You Can Rely On	36,40,48,52
NISSAN Services Designed With You in Mind	44
SCHEDULED MAINTENANCE GUIDE	
GT-R Performance Optimization Services	21,23,25,27
Determining the Proper Maintenance Interval	11
Explanation of Scheduled Maintenance Items	12
Additional Maintenance Items	14
Transmission Replacement Log	19
Maintenance Schedule	29
Maintenance Log	55

OWNER'S LITERATURE INFORMATION

INDEX OF TOPICS

Recommended Fuel, Lubricants, Fluids
Starting and Driving Your Vehicle
Security System Operation
Changing a Flat Tire
New Vehicle Limited Warranty

Federal Emission Control Warranties

California Emission Control Warranties

Tire Pressure/Rotation
Tire Warranties/Safety Information

Consumer Affairs Assistance

Do It Yourself Information
General Maintenance

WHERE TO FIND INFORMATION

Owner's Manual: chapter 9
Owner's Manual: chapter 5
Owner's Manual: chapter 2
Owner's Manual: chapter 6, also see chapter 8
"2011 New Vehicle Limited Warranty" section in
Warranty Information Booklet

"Federal Vehicle Emission Control Limited Warranties"
section in Warranty Information Booklet

"California Vehicle Emission Control Warranties"
section in Warranty Information Booklet

Owner's Manual: chapter 8
Individual tire manufacturer warranty sections in
Warranty Information Booklet

"Nissan's Customer Care Program" section in Warranty
Information Booklet and "Overview" section in
*Customer Care/Lemon Law Information Booklet**

Owner's Manual: chapter 8
Owner's Manual: chapter 8

* Not applicable outside the United States



Maintain Your Investment

Preventative scheduled maintenance is an important investment to optimize the performance, reliability, safety and resale value of your NISSAN GT-R. Scheduling your vehicle's maintenance at the recommended intervals will ensure your vehicle is running at its best.

We want you to enjoy your NISSAN GT-R. This Service and Maintenance Guide is designed to help you make sure your vehicle receives proper and timely maintenance that is necessary. Key services are explained in detail, along with an outline of scheduled maintenance to help you maintain your vehicle. Your GT-R certified NISSAN dealer can assist you in determining the best schedule based on your driving habits and local conditions.

Failure to perform scheduled maintenance may result in excluding portions of your vehicle from warranty coverage and may reduce the performance, safety, reliability and/or resale value of your vehicle. For details of the warranty, please read the 2012 NISSAN GT-R Warranty Information Booklet.

WHY NISSAN SERVICE?*



GENUINE SERVICE

As to specific service to the GT-R, special skills, knowledge and equipment are necessary to properly inspect and adjust the GT-R engine, transmission, suspension and brakes to maintain performance. A GT-R certified NISSAN dealer has the GT-R certified technical staff and the special equipment to properly maintain your GT-R.

Many general maintenance items can be performed at all NISSAN dealers. However, make sure the specified other fluids and parts are used when the maintenance is performed.



For All Your Service Needs

WHY NISSAN SERVICE?*



To safeguard the quality, reliability and safety of your vehicle, a GT-R certified NISSAN dealer is recommended for maintenance or repair. Only GT-R certified NISSAN dealers offer you these advantages:

- NISSAN trained and certified GT-R technicians
- Immediate access to warranty service history and NISSAN technical information
- Latest diagnostic, special tools and service techniques
- Genuine NISSAN Parts that meet NISSAN's demanding standards
- 12 month/12,000 mile parts and labor limited warranty when Genuine NISSAN Parts are installed by your dealer
- Lifetime limited warranty on select replacement parts
- Clear, up-front estimates
- Nearly 700 GT-R certified locations nationwide
- Shuttle service/Courtesy van (at participating dealers)
- Access to a NISSAN GT-R certified body repair facility

Your GT-R certified NISSAN dealer is a full-service maintenance and repair center. We recommend using authorized NISSAN Service and Genuine NISSAN Parts that we have designed for their reliability, safety and suitability for your NISSAN vehicle. We are committed to providing you with quick, efficient and competitively priced service and parts.

* May differ or not apply outside the United States, please inquire of your dealer.



About GT-R Maintenance

The GT-R is Nissan's first supercar category vehicle. The GT-R is equipped with special systems. These systems are different than those used on conventional vehicles to allow for the high performance driving characteristics of the GT-R. Your GT-R should be maintained by a GT-R certified NISSAN dealer. Special skills, knowledge and equipment are necessary to properly maintain your GT-R.

Special skill, knowledge and equipment are necessary to properly inspect and adjust the GT-R engine, transmission, suspension and brakes to maintain performance. A GT-R certified NISSAN dealer has the GT-R certified technical staff and the special equipment to properly maintain your GT-R.

Nissan recommends maintenance items that require the replacement of parts, engine oil, oil filters, and air filters should be performed by a GT-R certified dealer. Make sure the specified fluids and parts are used when the maintenance is performed. NISSAN also recommends the replacement of parts such as the brakes should be performed by a GT-R certified dealer.

For recommended and/or required GT-R lubricants and fluids, refer to Chapter 9 of your owner's manual.



GT-R Performance Optimization Services

In addition to the regular maintenance recommended by NISSAN, the GT-R requires the following Inspections; **Measurement and adjustment of wheel alignment** if needed (unladen with fuel and lubricants full, including tire pressure adjustment) Note 1

- Note 1: This vehicle is equipped with a high performance suspension. As the suspension components "break-in", the vehicle's wheel alignment needs to be measured and adjusted by a GT-R certified dealer at the recommended intervals.

Engine settings (balancing of air flow for left and right banks) Note 2

- Note 2: Each cylinder bank of this engine operates independently due to the vehicle's twin turbocharger design. Each side of the engine must operate at the same level of performance. The air flow of each bank must be checked and adjusted as necessary by a GT-R certified NISSAN dealer.

Increase tightening of the drive shaft and center nut on hub Note 3

- Note 3: During the first GT-R special inspection (after driving 1,000 miles), the front and rear wheel hub lock nuts (each one on the left and right sides) must be tightened to the specified tightening specification. The wheel lock nuts should be properly tightened every time the inspection is performed.

Transmission settings Note 4

- Note 4: The design of the clutch and transmission requires inspection and adjustment of the clutch and shift forks by a GT-R certified NISSAN dealer at the recommended intervals. Depending on driving conditions, more frequent adjustments may be necessary to help maximize vehicle performance.



Checking the exhaust finisher and rear bumper clearance Note 5

- Note 5: Clearance between the enlarged-diameter exhaust finisher and the rear bumper is realized by using highly rigid exhaust mount rubber to control rear muffler vibration. The clearance between the exhaust finisher and the rear bumper may alter as the exhaust mount rubber changes shape due to vibration, passage of time and high exhaust temperature during high performance driving. Therefore, inspection of the clearance is necessary during the GT-R special inspection and when engaging in performance driving.

Increase tightening of the strut support bar attachment section with the shock absorber Note 6

- Note 6: During the first GT-R special inspection (after 1,000 miles), the strut support bar attachment bracket and shock absorber (each one on the left and right sides) must be tightened to the specified tightening specification. The strut support bar attachment bracket and shock absorber (each one on the left and right sides) must be tightened to the specified tightening specification 300-600 miles (500-1000 km) after the support bar or shock absorber have been removed or installed.

These inspections are required at the following intervals: 1,000 miles, 12 months, 24 months and 36 months.

These inspections will be performed free of charge at a GT-R certified NISSAN dealer only. See your 2012 NISSAN GT-R Warranty Information Booklet for details.

After the period of GT-R performance optimization services in the first three years, these items are included in the regular scheduled maintenance.

*Repairs and adjustments involving part replacement, etc. determined to be necessary as a result of these inspections are performed at the customer's expense.

*See your 2012 NISSAN GT-R Warranty Information Booklet for significant limitations, exclusions, and possible voiding of warranty resulting from failure to have these necessary inspections, repairs and/or adjustments performed.

EXTENDED SERVICE PLANS*

Security+Plus®

VEHICLE PROTECTION PLAN

If someone told you, you could drive your new GT-R for the next 7 years or 100,000 miles, almost worry-free of unexpected repair costs, would you be interested?

NISSAN's "**Security+Plus**" family of extended service contracts delivers the peace of mind that does just that. **Security+Plus** vehicle protection plans can cover everything from over 1,100 vehicle components to roadside assistance to rental vehicle costs and provide: **Coverage** (at GT-R certified NISSAN dealers); utilizing: **Genuine NISSAN Parts** (new or in some cases remanufactured); installed by: **Factory Trained Technicians** (trained by us to work on your GT-R). And you'll be protected against future inflation (rising cost of parts and labor).

Security+Plus coverage can be purchased any time within your GT-R's original 3-year/36,000-mile new vehicle basic limited warranty period. Just contact your selling dealer and tell them you'd like to take advantage of one of the best mechanical breakdown plans available for your GT-R today.

Maintenance+Plus®

VEHICLE SERVICE PLAN

Do you currently have someone that maintains your yard? Cleans your house? Maintains your vehicle? With **Maintenance+Plus** you'll be hiring NISSAN to maintain your GT-R to factory specification by factory trained technicians. Like Security+Plus, you'll benefit from **Coverage at GT-R certified NISSAN dealers, Genuine NISSAN Parts, Factory Trained Technicians**, and you'll be protected against future inflation (rising costs of parts and labor). What could be easier? A **special Maintenance+Plus** plan has been specifically designed for your GT-R. Didn't purchase **Maintenance+Plus** at the time of vehicle delivery? Don't sweat the small stuff, 'New' **Maintenance+Plus** contracts can be purchased any time within the first 36-months/7,500-miles of original vehicle GTR sale date. If for some reason you missed this initial window a 'Used' **Maintenance+Plus** contract (that covers Oil and Filter changes) may be purchased at anytime throughout the life of the your vehicle GT-R. Just contact your selling dealer and tell them you'd like to take advantage of one of the best maintenance plans available for your GT-R today.

* These products not available outside the United States.

GENUINE NISSAN COLLISION PARTS

Your GT-R has been manufactured using a combination of stamped steel, stamped aluminum, die-cast aluminum, and carbon reinforced components and high precision assembly jigs. If you have an accident, insist on Genuine NISSAN Collision Parts. If you want your vehicle to be restored using parts made to NISSAN's original exacting specifications – if you want it to last, help to protect your personal safety and to help hold its resale value, the solution is simple. Tell your insurance agent and your repair shop to use only Genuine NISSAN Collision Parts. As special skills, information and equipment are required to correctly repair the body, be sure to contact your NISSAN dealer or visit www.NissanUSA.com under owner information to locate a GT-R certified body shop in your area.

Many non-genuine parts are copies made from impressions of NISSAN parts and may not match the specifications and performance standards of Genuine NISSAN Parts. As a result, non-genuine parts may not look or fit right, and may be less safe.

The hood on your vehicle is a good example. NISSAN designed it with hood buckling creases to help prevent the hood from penetrating the interior of your vehicle in an accident. Non-genuine parts may not provide such built-in safeguards.

In some states, the law says you must be advised if non-genuine parts are used to repair your vehicle. **Why should you take a chance?**

Replacement Panel Limited Lifetime Corrosion Warranty*

If you have your collision damage repaired using Genuine NISSAN Outer Sheet Metal Panels you don't have to worry about corrosion. That's because these panels are warranted against inside out rust-through perforation for as long as you own your NISSAN. Another reason to insist on Genuine NISSAN Collision Repair Parts.

See your participating GT-R certified NISSAN dealer for details.

* This warranty does not apply to vehicles or parts not distributed by Nissan North America and/or sold outside the United States.

DETERMINING THE PROPER MAINTENANCE INTERVAL

Depending on your driving habits and local conditions, you should follow one of the two maintenance schedules listed below for scheduled maintenance. In addition to Schedule 1 maintenance, additional maintenance must be performed for optimum performance. Use these guidelines to determine which maintenance schedule to use:

SCHEDULE 1 (Every 6,000 miles or 6 months, whichever comes first)

Schedule 1 features 6,000-mile service intervals. Use Schedule 1 if you primarily operate your vehicle under any of these conditions:

- Repeated short trips of less than 5 miles in normal temperatures or less than 10 miles in freezing temperatures
- Stop-and-go traffic in hot weather or low-speed driving for long distances
- Driving in dusty conditions or on rough, muddy, or salt-spread roads

SCHEDULE 2 (Every 6,000 miles or 6 months, whichever comes first)

Schedule 2 features 6,000-mile service intervals; with Schedule 2 fewer maintenance items are regularly checked or replaced than with Schedule 1.

Generally, Schedule 2 applies only to highway driving in temperate conditions. Use Schedule 2 only if you primarily operate your vehicle under conditions other than those listed in Schedule 1.

EXPLANATION OF SCHEDULED MAINTENANCE ITEMS

The following descriptions are provided to give you a better understanding of the scheduled maintenance items that should be regularly checked or replaced. The maintenance log indicates at which mileage/time intervals each item requires service.

In addition to scheduled maintenance, your NISSAN requires that some items be checked during normal day-to-day operation. You can find these items listed under "General Maintenance" in Chapter 8 of your Owner's Manual.

Maintenance items and intervals marked with "*" are recommended by NISSAN for reliable vehicle operation. You are not required to perform such maintenance in order to maintain the emission warranty or manufacturer recall liability.

When applicable, additional information can be found in the "Maintenance and do-it-yourself" section in Chapter 8 of your Owner's Manual.

For recommended fuel, lubricants, fluids, grease, and refrigerant, refer to Chapter 9 in your Owner's Manual.

Emission Control System Maintenance:

Drive Belts*

Check engine drive belts for wear, fraying or cracking. Replace any damaged drive belts.

Engine Air Filter

Replace at specified intervals. When driving for prolonged periods in dusty conditions, check/replace the filter more frequently.

Engine Coolant*

Replace engine coolant at the specified interval.

Engine Oil and Oil Filter

Replace engine oil and oil filter at the specified intervals. Check engine oil level every 1,800 miles and add as needed. For recommended oil grade

and viscosity refer to Chapter 9 in your Owner's Manual.

Engine Settings*

Balance the air flow for left and right banks at specified intervals.

Engine Valve Clearance*

Inspect only if valve noise increases. Adjust valve clearance if necessary.

Evaporative Emissions Control Vapor Lines*

Check vapor lines and connections for leaks or looseness. Tighten connections or replace parts as necessary.

Fuel Filter

Maintenance-free item.

Fuel Lines*

Check the fuel hoses, piping and connections for leaks, looseness, or deterioration. Tighten connections or replace parts as necessary.

EXPLANATION OF SCHEDULED MAINTENANCE ITEMS

Throttle Chamber Deposits*

Visually inspect the throttle chamber for deposits and clean as necessary.

Spark Plugs

Replace at specified intervals. Install new plugs of the same type as originally equipped.

Chassis and Body Maintenance:

Brake Lines and Cables

Visually inspect for proper installation. Check for chafing, cracks, deterioration, and signs of leaking. Replace any deteriorated or damaged parts immediately.

Brake Pads & Rotors

Check for wear, deterioration and fluid leaks. Replace any deteriorated or damaged parts immediately. Replace all four sets of brake pads and disc rotors at the same time to maintain maximum brake performance.

Exhaust System

Visually inspect the exhaust pipes, muffler and hangers for leaks, cracks, deterioration, and damage. Tighten connections or replace parts as necessary.

In-Cabin Microfilter

Replace at specified intervals. When driving for prolonged periods in dusty conditions, replace the filter more frequently.

Measurement and Adjustment of Wheel Alignment

Manage the wheel alignment by measuring and adjusting at specified intervals.

Propeller Shaft(s)

Check for damage, looseness, and grease leakage.

Steering Gear and Linkage, Axle and Suspension Parts, Drive Shaft Boots

Check for damage, looseness, and leakage of oil or grease. Under severe driving conditions, inspect more frequently.

Tire Rotation

Tires cannot be rotated as front tires are different size from rear tires.

Transmission Oil, Differential Oil

Replace fluid at specified intervals. Visually inspect for signs of leakage at specified intervals.

Transmission settings

To keep the best condition for transmission, this inspection allows learning of the clutch touch point and the engaged gear position and neutral position for each gear.

ADDITIONAL MAINTENANCE ITEMS

The information and specifications below apply only when engaging in performance driving. The following information applies if you engage in performance driving such as driving your GT-R for extended periods under the following conditions:

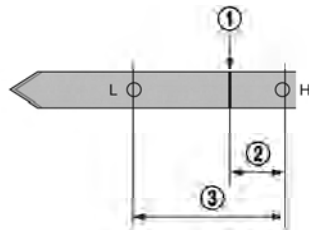
- Higher-rpm (approaching redline) operation,
- Frequent high pedal force braking from moderate and higher speeds,
- Frequent throttle activation,
- Fast revving throughout the RPM range

In such cases, the following additional maintenance guidelines apply. **However, you should also carefully read your 2012 NISSAN GT-R Warranty Information Booklet for important information concerning warranty coverage, limitations, and exclusions.** We recommend that maintenance be performed at a GT-R certified NISSAN dealer. NISSAN will only pay for GT-R Performance Optimization Services performed at a GT-R certified NISSAN dealer.

FLUIDS

The information and specifications below apply only when engaging in performance driving.

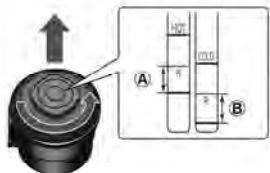
- Before driving, check the fluid levels and adjust as necessary using the specified fluid.
- NISSAN recommends to adjust the engine oil level ① to be 0.39 in. (10 mm) ② below the H mark on the engine oil dipstick. ③ range is 1.18 in (30 mm).



Before checking the oil level, run the engine until it reaches operating temperature and wait at least 5 minutes after turning off the engine. Make sure the oil level always remains above the L mark.

ADDITIONAL MAINTENANCE ITEMS

- Adjust the power steering fluid level at the R mark on the power steering dipstick. Fluid temperature: Hot: 122 to 176°F (50 to 80°C) (A) Cold: 32 to 86°F (0 to 30°C) (B)



- Be sure to change the fluids listed below with the specified fluids after driving.

Fluid temperature can be checked on the multi function display.

- Engine Coolant Temperature
- Engine Oil Temperature
- Transmission Oil Temperature

See the separate Multi Function Display Owner's Manual.

ADDITIONAL MAINTENANCE ITEMS

ITEMS		Engine Oil	
GT-R SPECIFIED FLUIDS		Mobil 1 (0W-40)*1	
MAINTENANCE INTERVAL	● When the oil temperature stays below 230°F (110°C) while driving	Change engine oil and engine oil filter at the same interval as Schedule 1 and 2 in the 2012 NISSAN GT-R Service and Maintenance Guide section.	
	● When the oil temperature reaches between 230°F (110°C) and 266°F (130°C) while driving	Change engine oil and engine oil filter every 3,000 miles (5,000 km).	
	● When the oil temperature exceeds 266°F (130°C) while driving	Change engine oil and engine oil filter immediately after stopping.	
ITEMS		Transmission Oil	
GT-R SPECIFIED FLUIDS		Genuine NISSAN Transmission Oil R35 Special	
MAINTENANCE INTERVAL	● When the oil temperature stays below 248°F (120°C) while driving	Change transmission oil at the same interval as Schedule 1 and 2 in the 2012 NISSAN GT-R Service and Maintenance Guide section.	
	● When the oil temperature reaches between 248°F (120°C) and 284°F (140°C) while driving	Change transmission every 3,000 miles (5,000 km).	
	● When the oil temperature exceeds 284°F (140°C) while driving	Change both transmission oil and differential oil immediately after stopping. Differential oil temperature usually increases concurrently.	
ITEMS		Differential Oil (front and rear)	
GT-R SPECIFIED FLUIDS		Castrol SAF-XJ 75W-140	
MAINTENANCE INTERVAL		Change differential oil every 3,000 miles (5,000 km).	
ITEMS		Brake Fluid	
GT-R SPECIFIED FLUIDS		Genuine NISSAN Brake Fluid R35 Special II*2	
MAINTENANCE INTERVAL		Change brake fluid every 3,000 miles (5,000 km).	

*1: Mobil 1 (0W-40) (100

synthetic) is the factory fill oil. The VR38 engine with its plasma-sprayed bores was developed using this oil. NISSAN cannot ensure proper engine operation and durability if other 0W-40 synthetic oil is used. If Mobil 1 (0W-40) is not available, Mobil 1 (10W-40) (100 synthetic) may be used; however, some performance loss may be noticed.

*2: Genuine NISSAN Brake Fluid R35 Special II is the factory fill brake fluid. The Vehicle Dynamic Control (VDC) unit and other related parts were specially designed for this brake fluid and NISSAN cannot ensure the best performance and proper operation of the vehicle if other brake fluid is used.

ADDITIONAL MAINTENANCE ITEMS

INSPECTION AND ADJUSTMENTS OF TIRES, SUSPENSION, CLUTCHES AND BRAKES

The information and specifications below apply only when engaging in performance driving.

- Measure and adjust (if needed) the wheel alignment.
- Check tire wear.
- Check the tire pressure and adjust the pressure as necessary when the tires are cold. Refer to GT-R Owner's Manual.
- Make sure the tire valve stem cap is installed and that the valve stem is tight.
- Make sure the wheel nuts are tight.
- Make sure the drive shaft nuts are tight.
- Secure road wheel balance weights with aluminum tape or equivalent.
- Make sure the tire has not slipped on the wheel causing the assembly to be out of balance. The reference marks on the tire and wheel should be aligned. If the reference marks are not aligned, the tire has slipped on the wheel. Have the wheels/tires rebalanced. Make sure the old reference marks are erased and new reference marks are applied to the wheel and tire. When installing new tires on the wheels, make sure new reference marks are applied to the wheels and tires.
- Check for the heat deterioration of the brakes and parts around the brakes. NISSAN recommends that the brakes should be bled before engaging in performance driving and when replacing the brake fluid. It is recommended that bleeding the brakes be performed when the brake calipers are hot [about 212°F (100°C)]
- Check around the engine, transmission, differential and under the vehicle for oil and coolant leaks.
- Before engaging in performance driving, the clutch clearance may need to be adjusted. See your GT-R certified NISSAN dealer for information. NOTICE: Failure to have the clutches properly adjusted before performance driving may cause the transmission oil temperature to increase which may cause transmission damage.
- Check the steering and suspension system and other links for loose and/or damaged parts before and after driving.

ADDITIONAL MAINTENANCE ITEMS

REPLENISHING COOLANT

The information and specifications below apply only when engaging in performance driving.

Check the coolant level in the pressurized coolant reservoir tank. Adjust the level so that the fluid is between the MAX and MIN markings. For the coolant, use genuine NISSAN Blue Long Life Antifreeze/Coolant. (On delivery of a new vehicle, the reservoir is filled up to the MIN level. Be sure to replenish approximately 0.3 to 0.4 US quart (0.3 to 0.4 liter) of coolant.)

NOTICE: Do not overfill the coolant. This may increase the pressure in the cooling system and cause coolant leaks.

COOLANT MIXTURE RATIO

The information and specifications below apply only when engaging in performance driving. For maximum cooling system performance, the coolant mixture ratio should be a combination of 30% antifreeze and 70% demineralized or distilled water.

If ambient temperatures are anticipated below 5°F (-15°C), make sure a proper mixture ratio of 50% antifreeze and 50% demineralized or distilled water is used.

Do not add coolant over the MAX level. This may cause coolant leaks because the pressure in the cooling system may become too high and a hose may become disconnected.

To maximize vehicle performance, the coolant mixture ratio should be a combination of 30% antifreeze and 70% demineralized or distilled water for maximum cooling system performance regardless of ambient temperatures.

COOL DOWN

The information and specifications below apply only when engaging in performance driving.

Cool down the vehicle to help extend the life of the vehicle if coolant temperatures are extremely high.

Drive the vehicle at 37 to 50 MPH (60 to 80 km/h), in 5th or 6th gear for 2 to 3 miles (3 to 5 km) and then stop the engine.

TRANSMISSION ASSEMBLY REPLACEMENT RECORD

When replacing the transmission assembly, be sure to record the new serial number in the space provided.

Transmission Serial No.	Dealer name or signature										
<table border="1"><tr><td></td><td></td><td></td><td></td><td></td><td></td><td></td><td></td><td></td><td></td></tr></table>											
Date:											
Mileage at replacement:	Miles										

Transmission Serial No.	Dealer name or signature										
<table border="1"><tr><td></td><td></td><td></td><td></td><td></td><td></td><td></td><td></td><td></td><td></td></tr></table>											
Date:											
Mileage at replacement:	Miles										

Transmission Serial No.	Dealer name or signature										
<table border="1"><tr><td></td><td></td><td></td><td></td><td></td><td></td><td></td><td></td><td></td><td></td></tr></table>											
Date:											
Mileage at replacement:	Miles										

MAINTENANCE LOG AND RECORDS



The following Maintenance Log has been compiled by NISSAN to assist you in performing the recommended maintenance services and keeping appropriate records of services performed. The maintenance log is composed of the log for GT-R special inspections and the log for scheduled maintenance. Along with the related repair invoices, receipts, and other such records, a properly documented maintenance history could enhance the value of your vehicle should you ever wish to sell it. The services listed represent the minimal NISSAN recommended requirements for each time/mileage interval, up to 96,000 miles / 96 months.

Abbreviations

[]: Performed based on the mileage only.

< >: Performed based on the number of months only.

GT-R Complimentary Performance Optimization Services*

*Necessary repairs discovered during inspections may incur service charges.

1,000 MILES

- ☐ Inspect the following:
 - Measurement and adjustment (if needed) of wheel alignment
 - Transmission settings
 - Engine settings¹
 - Wheel hub (to axle shaft) lock nut torque, front and rear
 - Exhaust finishers to rear bumper clearance
 - Front strut support bar bracket and shock absorber mounting bolt torque

¹ Balancing of air flow for left and right banks

GT-R Performance Optimization Service Log Record of Service Details

Measurement and Adjustment of wheel alignment

Measured Values

FR	Total Toe-In			in/mm
	Camber	LH		Deg/min (Dec/Deg)
		RH		Deg/min (Dec/Deg)
	Caster	LH		Deg/min (Dec/Deg)
RH			Deg/min (Dec/Deg)	
RR	Total Toe-In			in/mm
	Camber	LH		Deg/min (Dec/Deg)
		RH		Deg/min (Dec/Deg)

Adjusted Values

FR	Total Toe-In			in/mm
	Camber	LH		Deg/min (Dec/Deg)
		RH		Deg/min (Dec/Deg)
	Caster	LH		Deg/min (Dec/Deg)
RH			Deg/min (Dec/Deg)	
RR	Total Toe-In			in/mm
	Camber	LH		Deg/min (Dec/Deg)
		RH		Deg/min (Dec/Deg)

Engine Settings

Measured Values

Engine Speed	rpm
Coolant Temp.	°F (°C)
Engine Oil Temp.	°F (°C)
MAS A/F SE-B1	mV
MAS A/F SE-B2	mV
Throttle Angle-B1	deg
Throttle Angle-B2	deg

Transmission Settings

Measured Values

Engine Speed	rpm
Trans. Oil Temp.	°F (°C)

Status of Transmission Setting

Clutch Gear Learning	Previous Learned Value
	Current Learned Value

* Circle the settings as delivered to the Customer

Clutch A touch point setting value	
Clutch B touch point setting value	
Adjust clutch A capacity setting value	
Adjust clutch B capacity setting value	

Customer Name	
Address	

Mileage	Miles/km
Dealer Name	
Date	
Technician Name	

Notes

GT-R Complimentary Performance Optimization Services*

*Necessary repairs discovered during inspections may incur service charges.

12 MONTHS

- ☐ Inspect the following:
 - ___ Measurement and adjustment (if needed) of wheel alignment
 - ___ Transmission settings
 - ___ Engine settings¹
 - ___ Wheel hub (to axle shaft) lock nut torque, front and rear
 - ___ Exhaust finishers to rear bumper clearance

¹ Balancing of air flow for left and right banks

[squf] Refer to the appropriate Schedule 1 or Schedule 2, recommended maintenance schedule for additional maintenance items.

GT-R Performance Optimization Service Log Record of Service Details

Measurement and Adjustment of wheel alignment

Measured Values

FR	Total Toe-In			in/mm
	Camber	LH		Deg/min (Dec/Deg)
		RH		Deg/min (Dec/Deg)
	Caster	LH		Deg/min (Dec/Deg)
RH			Deg/min (Dec/Deg)	
RR	Total Toe-In			in/mm
	Camber	LH		Deg/min (Dec/Deg)
		RH		Deg/min (Dec/Deg)

Adjusted Values

FR	Total Toe-In			in/mm
	Camber	LH		Deg/min (Dec/Deg)
		RH		Deg/min (Dec/Deg)
	Caster	LH		Deg/min (Dec/Deg)
RH			Deg/min (Dec/Deg)	
RR	Total Toe-In			in/mm
	Camber	LH		Deg/min (Dec/Deg)
		RH		Deg/min (Dec/Deg)

Engine Settings

Measured Values

Engine Speed	rpm
Coolant Temp.	°F (°C)
Engine Oil Temp.	°F (°C)
MAS A/F SE-B1	mV
MAS A/F SE-B2	mV
Throttle Angle-B1	deg
Throttle Angle-B2	deg

Transmission Settings

Measured Values

Engine Speed	rpm
Trans. Oil Temp.	°F (°C)

Status of Transmission Setting

Clutch Gear Learning	Previous Learned Value
	Current Learned Value

* Circle the settings as delivered to the Customer

Clutch A touch point setting value	
Clutch B touch point setting value	
Adjust clutch A capacity setting value	
Adjust clutch B capacity setting value	

Customer Name	
Address	

Mileage	Miles/km
Dealer Name	
Date	
Technician Name	

Notes

GT-R Complimentary Performance Optimization Services*

*Necessary repairs discovered during inspections may incur service charges.

24 MONTHS

- ☐ Inspect the following:
 - ___ Measurement and adjustment (if needed) of wheel alignment
 - ___ Transmission settings
 - ___ Engine settings¹
 - ___ Wheel hub (to axle shaft) lock nut torque, front and rear
 - ___ Exhaust finishers to rear bumper clearance

¹ Balancing of air flow for left and right banks

Refer to the appropriate Schedule 1 or Schedule 2, recommended maintenance schedule for additional maintenance items.

GT-R Performance Optimization Service Log Record of Service Details

Measurement and Adjustment of wheel alignment

Measured Values

FR	Total Toe-In			in/mm
	Camber	LH		Deg/min (Dec/Deg)
		RH		Deg/min (Dec/Deg)
	Caster	LH		Deg/min (Dec/Deg)
RH			Deg/min (Dec/Deg)	
RR	Total Toe-In			in/mm
	Camber	LH		Deg/min (Dec/Deg)
		RH		Deg/min (Dec/Deg)

Adjusted Values

FR	Total Toe-In			in/mm
	Camber	LH		Deg/min (Dec/Deg)
		RH		Deg/min (Dec/Deg)
	Caster	LH		Deg/min (Dec/Deg)
RH			Deg/min (Dec/Deg)	
RR	Total Toe-In			in/mm
	Camber	LH		Deg/min (Dec/Deg)
		RH		Deg/min (Dec/Deg)

Engine Settings

Measured Values

Engine Speed	rpm
Coolant Temp.	°F (°C)
Engine Oil Temp.	°F (°C)
MAS A/F SE-B1	mV
MAS A/F SE-B2	mV
Throttle Angle-B1	deg
Throttle Angle-B2	deg

Transmission Settings

Measured Values

Engine Speed	rpm
Trans. Oil Temp.	°F (°C)

Status of Transmission Setting

Clutch Gear Learning	Previous Learned Value
	Current Learned Value

* Circle the settings as delivered to the Customer

Clutch A touch point setting value	
Clutch B touch point setting value	
Adjust clutch A capacity setting value	
Adjust clutch B capacity setting value	

Customer Name	
Address	

Mileage	Miles/km
Dealer Name	
Date	
Technician Name	

Notes

GT-R Complimentary Performance Optimization Services*

*Necessary repairs discovered during inspections may incur service charges.

36 MONTHS

- ☐ Inspect the following:
 - ___ Measurement and adjustment (if needed) of wheel alignment
 - ___ Transmission settings
 - ___ Engine settings¹
 - ___ Wheel hub (to axle shaft) lock nut torque, front and rear
 - ___ Exhaust finishers to rear bumper clearance

¹ Balancing of air flow for left and right banks

Refer to the appropriate Schedule 1 or Schedule 2, recommended maintenance schedule for additional maintenance items.

GT-R Performance Optimization Service Log Record of Service Details

Measurement and Adjustment of wheel alignment

Measured Values

FR	Total Toe-In			in/mm
	Camber	LH		Deg/min (Dec/Deg)
		RH		Deg/min (Dec/Deg)
	Caster	LH		Deg/min (Dec/Deg)
RH			Deg/min (Dec/Deg)	
RR	Total Toe-In			in/mm
	Camber	LH		Deg/min (Dec/Deg)
		RH		Deg/min (Dec/Deg)

Adjusted Values

FR	Total Toe-In			in/mm
	Camber	LH		Deg/min (Dec/Deg)
		RH		Deg/min (Dec/Deg)
	Caster	LH		Deg/min (Dec/Deg)
RH			Deg/min (Dec/Deg)	
RR	Total Toe-In			in/mm
	Camber	LH		Deg/min (Dec/Deg)
		RH		Deg/min (Dec/Deg)

Engine Settings

Measured Values

Engine Speed	rpm
Coolant Temp.	°F (°C)
Engine Oil Temp.	°F (°C)
MAS A/F SE-B1	mV
MAS A/F SE-B2	mV
Throttle Angle-B1	deg
Throttle Angle-B2	deg

Transmission Settings

Measured Values

Engine Speed	rpm
Trans. Oil Temp.	°F (°C)

Status of Transmission Setting

Clutch Gear Learning	Previous Learned Value
	Current Learned Value

* Circle the settings as delivered to the Customer

Clutch A touch point setting value	
Clutch B touch point setting value	
Adjust clutch A capacity setting value	
Adjust clutch B capacity setting value	

Customer Name	
Address	

Mileage	Miles/km
Dealer Name	
Date	
Technician Name	

Notes

6,000 MILES OR 6 MONTHS

SCHEDULE 1 MAINTENANCE



- ☐ Replace engine oil and filter
- ☐ Inspect the following:
 - ___ Axle & suspension parts
 - ___ Brake pads & rotors
 - ___ Drive shaft boots
 - ___ Exhaust system
 - ___ Front suspension ball joints
 - ___ Propeller shaft
 - ___ Steering gear and linkage
 - ___ Steering linkage ball joints

SCHEDULE 2 MAINTENANCE



- ☐ Replace engine oil and filter

12,000 MILES OR 12 MONTHS

SCHEDULE 1 MAINTENANCE

- ☐ Replace engine oil and filter
- ☐ Replace in-cabin microfilter
- ☐ Inspect the following:
 - ___ <Engine startability and abnormal sound>
 - ___ <Driving performance at low and accelerating speed>
 - ___ <Throttle chamber deposits>
 - ___ Axle & suspension parts
 - ___ Brake lines & cables
 - ___ Brake pads & rotors
 - ___ Differential oil (front & rear)
 - ___ Drive shaft boots
 - ___ Exhaust system
 - ___ Front suspension ball joints
 - ___ Transmission oil
 - ___ Propeller shaft
 - ___ Steering gear and linkage
 - ___ Steering linkage ball joints

SCHEDULE 2 MAINTENANCE

- ☐ Replace engine oil and filter
- ☐ Replace in-cabin microfilter
- ☐ Inspect the following:
 - ___ <Engine startability and abnormal sound>
 - ___ <Driving performance at low and accelerating speed>
 - ___ <Throttle chamber deposits>
 - ___ Brake lines & cables
 - ___ Brake pads & rotors
 - ___ Differential oil (front & rear)
 - ___ Drive shaft boots
 - ___ Transmission oil
 - ___ Propeller shaft

<>: Performed based on the number of service months only.

Refer to the appropriate GT-R Performance Optimization Services section for additional maintenance items.

18,000 MILES OR 18 MONTHS

SCHEDULE 1 MAINTENANCE



- ☐ Replace engine oil and filter
- ☐ Inspect the following:
 - ___ Axle & suspension parts
 - ___ Brake pads & rotors
 - ___ Drive shaft boots
 - ___ Exhaust system
 - ___ Front suspension ball joints
 - ___ Propeller shaft
 - ___ Steering gear and linkage
 - ___ Steering linkage ball joints

SCHEDULE 2 MAINTENANCE



- ☐ Replace engine oil and filter

24,000 MILES OR 24 MONTHS

SCHEDULE 1 MAINTENANCE

- ☐ Replace engine oil and filter
- ☐ Replace engine coolant
- ☐ Replace in-cabin microfilter
- ☐ <Replace brake fluid>
- ☐ Inspect the following:
 - <Engine startability and abnormal sound>
 - <Driving performance at low and accelerating speed>
 - <Throttle chamber deposits>
 - Axle & suspension parts
 - Brake lines & cables
 - Brake pads & rotors
 - Differential oil (front & rear)
 - Engine drive belts
 - Drive shaft boots
 - Exhaust system
 - Front suspension ball joints
 - Fuel lines/connections
 - Fuel tank vapor vent system hoses
 - Transmission oil
 - Propeller shaft
 - Steering gear and linkage
 - Steering linkage ball joints

SCHEDULE 2 MAINTENANCE

- ☐ Replace engine oil and filter
- ☐ Replace engine coolant
- ☐ Replace in-cabin microfilter
- ☐ <Replace brake fluid>
- ☐ Inspect the following:
 - <Engine startability and abnormal sound>
 - <Driving performance at low and accelerating speed>
 - <Throttle chamber deposits>
 - Brake lines & cables
 - Brake pads & rotors
 - Differential oil (front & rear)
 - Engine drive belts
 - Drive shaft boots
 - Exhaust system
 - Front suspension ball joints
 - Fuel lines/connections
 - Fuel tank vapor vent system hoses
 - Transmission oil
 - Propeller shaft
 - Steering gear and linkage
 - Steering linkage ball joints

<>: Performed based on the number of service months only.

Refer to the appropriate GT-R Performance Optimization Services section for additional maintenance items.

30,000 MILES OR 30 MONTHS

SCHEDULE 1 MAINTENANCE



- ☐ Replace engine oil and filter
- ☐ [Replace engine air filter]
- ☐ Inspect the following:
 - ___ Axle & suspension parts
 - ___ Brake pads & rotors
 - ___ Drive shaft boots
 - ___ Exhaust system
 - ___ Front suspension ball joints
 - ___ Propeller shaft
 - ___ Steering gear and linkage
 - ___ Steering linkage ball joints

SCHEDULE 2 MAINTENANCE



- ☐ Replace engine oil and filter
- ☐ [Replace engine air filter]

[]: Performed based on the mileage only.

36,000 MILES OR 36 MONTHS

SCHEDULE 1 MAINTENANCE

- ☐ [Replace engine oil and filter]
- ☐ Replace in-cabin microfilter
- ☐ [Replace transmission oil]
- ☐ [Replace differential oil (front & rear)]
- ☐ Inspect the following:
 - ___ <Engine startability and abnormal sound>
 - ___ <Driving performance at low and accelerating speed>
 - ___ <Throttle chamber deposits>
 - ___ Engine drive belts
 - ___ Axle & suspension parts
 - ___ Brake lines & cables
 - ___ Brake pads & rotors
 - ___ Drive shaft boots
 - ___ Exhaust system
 - ___ Front suspension ball joints
 - ___ Propeller shaft
 - ___ Steering gear and linkage
 - ___ Steering linkage ball joints

SCHEDULE 2 MAINTENANCE

- ☐ [Replace engine oil and filter]
- ☐ Replace in-cabin microfilter
- ☐ [Replace transmission oil]
- ☐ [Replace differential oil (front & rear)]
- ☐ Inspect the following:
 - ___ <Engine startability and abnormal sound>
 - ___ <Driving performance at low and accelerating speed>
 - ___ <Throttle chamber deposits>
 - ___ Engine drive belts
 - ___ Brake lines & cables
 - ___ Brake pads & rotors
 - ___ Drive shaft boots
 - ___ Propeller shaft

[]: Performed based on the mileage only.

<>: Performed based on the number of service months only.

Refer to the appropriate GT-R Performance Optimization Services section for additional maintenance items.

42,000 MILES OR 42 MONTHS

SCHEDULE 1 MAINTENANCE



- ☐ Replace engine oil and filter
- ☐ Inspect the following:
 - ___ Axle & suspension parts
 - ___ Brake pads & rotors
 - ___ Drive shaft boots
 - ___ Exhaust system
 - ___ Front suspension ball joints
 - ___ Propeller shaft
 - ___ Steering gear and linkage
 - ___ Steering linkage ball joints

SCHEDULE 2 MAINTENANCE



- ☐ Replace engine oil and filter

GENUINE NISSAN PARTS YOU CAN RELY ON

Genuine NISSAN Oil Filters

Genuine NISSAN Oil Filters are designed specifically for your vehicle.

Genuine NISSAN Oil Filters have an anti-drainback valve that keeps oil in the filter when the engine is not running. This prevents harmful engine wear on start-up.



48,000 MILES OR 48 MONTHS

SCHEDULE 1 MAINTENANCE

- ☐ Replace engine oil and filter
- ☐ Replace engine coolant
- ☐ Replace in-cabin microfilter
- ☐ <Replace brake fluid>
- ☐ Inspect the following:
 - <Engine startability and abnormal sound>
 - <Driving performance at low and accelerating speed>
 - <Throttle chamber deposits>
 - Axle & suspension parts
 - Brake lines & cables
 - Brake pads & rotors
 - Differential oil (front & rear)
 - Drive shaft boots
 - Engine drive belts
 - Exhaust system
 - Exhaust finishers to rear bumper clearance²
 - Engine settings^{1, 2}
 - Transmission settings²
 - Measurement and adjustment of wheel alignment²
 - Front suspension ball joints
 - Fuel lines/connections
 - Fuel tank vapor vent system hoses
 - Transmission oil
 - Propeller shaft
 - Steering gear and linkage
 - Steering linkage ball joints
 - Wheel hub (to drive shaft) lock nut torque, front and rear²

SCHEDULE 2 MAINTENANCE

- ☐ Replace engine oil and filter
- ☐ Replace engine coolant
- ☐ Replace in-cabin microfilter
- ☐ <Replace brake fluid>
- ☐ Inspect the following:
 - <Engine startability and abnormal sound>
 - <Driving performance at low and accelerating speed>
 - <Throttle chamber deposits>
 - Axle & suspension parts
 - Brake lines & cables
 - Brake pads & rotors
 - Differential oil (front & rear)
 - Drive shaft boots
 - Engine drive belts
 - Exhaust system
 - Exhaust finishers to rear bumper clearance²
 - Engine settings^{1, 2}
 - Transmission settings²
 - Measurement and adjustment of wheel alignment²
 - Front suspension ball joints
 - Fuel lines/connections
 - Fuel tank vapor vent system hoses
 - Transmission oil
 - Propeller shaft
 - Steering gear and linkage
 - Steering linkage ball joints
 - Wheel hub (to drive shaft) lock nut torque, front and rear²

¹ Balancing of air flow for left and right banks

² If the performance optimization services at 36 months (free of charge) including this inspection have not been finished yet, this inspection is not necessary.

< >: Performed based on the number of service months only.

GT-R Performance Optimization Service Log Record of Service Details

Measurement and Adjustment of wheel alignment

Measured Values

FR	Total Toe-In			in/mm
	Camber	LH		Deg/min (Dec/Deg)
		RH		Deg/min (Dec/Deg)
	Caster	LH		Deg/min (Dec/Deg)
RH			Deg/min (Dec/Deg)	
RR	Total Toe-In			in/mm
	Camber	LH		Deg/min (Dec/Deg)
		RH		Deg/min (Dec/Deg)

Adjusted Values

FR	Total Toe-In			in/mm
	Camber	LH		Deg/min (Dec/Deg)
		RH		Deg/min (Dec/Deg)
	Caster	LH		Deg/min (Dec/Deg)
RH			Deg/min (Dec/Deg)	
RR	Total Toe-In			in/mm
	Camber	LH		Deg/min (Dec/Deg)
		RH		Deg/min (Dec/Deg)

Engine Settings

Measured Values

Engine Speed	rpm
Coolant Temp.	°F (°C)
Engine Oil Temp.	°F (°C)
MAS A/F SE-B1	mV
MAS A/F SE-B2	mV
Throttle Angle-B1	deg
Throttle Angle-B2	deg

Transmission Settings

Measured Values

Engine Speed	rpm
Trans. Oil Temp.	°F (°C)

Status of Transmission Setting

Clutch Gear Learning	Previous Learned Value
	Current Learned Value

* Circle the settings as delivered to the Customer

Clutch A touch point setting value	
Clutch B touch point setting value	
Adjust clutch A capacity setting value	
Adjust clutch B capacity setting value	

Customer Name	
Address	

Mileage	Miles/km
Dealer Name	
Date	
Technician Name	

Notes

54,000 MILES OR 54 MONTHS

SCHEDULE 1 MAINTENANCE



- ☐ [Replace engine oil and filter]
- ☐ Inspect the following:
 - ___ Axle & suspension parts
 - ___ Brake pads & rotors
 - ___ Drive shaft boots
 - ___ Exhaust system
 - ___ Front suspension ball joints
 - ___ Propeller shaft
 - ___ Steering gear and linkage
 - ___ Steering linkage ball joints

SCHEDULE 2 MAINTENANCE



- ☐ Replace engine oil and filter

[]: Performed based on the mileage only.

GENUINE NISSAN PARTS YOU CAN RELY ON*

Batteries

If your vehicle is slow to start or will not start, please see your NISSAN dealer about a Genuine NISSAN Replacement Battery. Genuine NISSAN Replacement Batteries are designed to meet your vehicle's original specifications and feature an 84 Month Limited Warranty with 24 Month Free Replacement, regardless of mileage. Plus your NISSAN dealer has the knowledge and equipment to test your battery before it fails, so you can travel in confidence.



* May or may not apply outside the United States, please inquire of your dealer.
See your participating NISSAN GT-R certified dealer for details.

60,000 MILES OR 60 MONTHS

SCHEDULE 1 MAINTENANCE

- ☐ Replace engine oil and filter
- ☐ Replace in-cabin microfilter
- ☐ [Replace engine air filter]
- ☐ [Replace spark plugs]³
- ☐ <Replace brake hoses>
- ☐ Inspect the following:
 - ___ <Engine startability and abnormal sound>
 - ___ <Driving performance at low and accelerating speed>
 - ___ <Throttle chamber deposits>
 - ___ Engine settings^{1, 2}
 - ___ Transmission settings²
 - ___ Measurement and adjustment of wheel alignment²
 - ___ Axle & suspension parts
 - ___ Brake lines & cables
 - ___ Brake pads & rotors
 - ___ Differential oil (front & rear)
 - ___ Drive shaft boots
 - ___ Engine drive belts
 - ___ Exhaust system
 - ___ Exhaust finishers to rear bumper clearance²
 - ___ Front suspension ball joints
 - ___ Transmission oil
 - ___ Propeller shaft
 - ___ Steering gear and linkage
 - ___ Steering linkage ball joints
 - ___ Wheel hub (to drive shaft) lock nut torque, front and rear²

SCHEDULE 2 MAINTENANCE

- ☐ Replace engine oil and filter
- ☐ Replace in-cabin microfilter
- ☐ [Replace engine air filter]
- ☐ [Replace spark plugs]³
- ☐ Replace brake hoses
- ☐ Inspect the following:
 - ___ <Engine startability and abnormal sound>
 - ___ <Driving performance at low and accelerating speed>
 - ___ <Throttle chamber deposits>
 - ___ Engine settings^{1, 2}
 - ___ Transmission settings²
 - ___ Measurement and adjustment of wheel alignment²
 - ___ Brake lines & cables
 - ___ Brake pads & rotors
 - ___ Differential oil (front & rear)
 - ___ Drive shaft boots
 - ___ Engine drive belts
 - ___ Exhaust finishers to rear bumper clearance²
 - ___ Transmission oil
 - ___ Propeller shaft
 - ___ Wheel hub (to drive shaft) lock nut torque, front and rear²

¹ Balancing of air flow for left and right banks

² If the performance optimization services at 36 months (free of charge) including this inspection have not been finished yet, this inspection is not necessary.

³ Replace spark plug when the spark plug gap reaches 1.0 mm (0.039 in) or more, even if within specified periodic replacement mileage.

[]: Performed based on the mileage only.

< >: Performed based on the number of service months only.

GT-R Performance Optimization Service Log Record of Service Details

Measurement and Adjustment of wheel alignment

Measured Values

FR	Total Toe-In			in/mm
	Camber	LH		Deg/min (Dec/Deg)
		RH		Deg/min (Dec/Deg)
	Caster	LH		Deg/min (Dec/Deg)
RH			Deg/min (Dec/Deg)	
RR	Total Toe-In			in/mm
	Camber	LH		Deg/min (Dec/Deg)
		RH		Deg/min (Dec/Deg)

Adjusted Values

FR	Total Toe-In			in/mm
	Camber	LH		Deg/min (Dec/Deg)
		RH		Deg/min (Dec/Deg)
	Caster	LH		Deg/min (Dec/Deg)
RH			Deg/min (Dec/Deg)	
RR	Total Toe-In			in/mm
	Camber	LH		Deg/min (Dec/Deg)
		RH		Deg/min (Dec/Deg)

Engine Settings

Measured Values

Engine Speed	rpm
Coolant Temp.	°F (°C)
Engine Oil Temp.	°F (°C)
MAS A/F SE-B1	mV
MAS A/F SE-B2	mV
Throttle Angle-B1	deg
Throttle Angle-B2	deg

Transmission Settings

Measured Values

Engine Speed	rpm
Trans. Oil Temp.	°F (°C)

Status of Transmission Setting

Clutch Gear Learning	Previous Learned Value
	Current Learned Value

* Circle the settings as delivered to the Customer

Clutch A touch point setting value	
Clutch B touch point setting value	
Adjust clutch A capacity setting value	
Adjust clutch B capacity setting value	

Customer Name	
Address	

Mileage	Miles/km
Dealer Name	
Date	
Technician Name	

Notes

66,000 MILES OR 66 MONTHS

SCHEDULE 1 MAINTENANCE



- ☐ Replace engine oil and filter
- ☐ Inspect the following:
 - ___ Axle & suspension parts
 - ___ Brake pads & rotors
 - ___ Drive shaft boots
 - ___ Exhaust system
 - ___ Front suspension ball joints
 - ___ Propeller shaft
 - ___ Steering gear and linkage
 - ___ Steering linkage ball joints

SCHEDULE 2 MAINTENANCE



- ☐ Replace engine oil and filter

NISSAN SERVICES DESIGNED WITH YOU IN MIND*

Your NISSAN Dealer is Your Complete Source for Tires

- Original Equipment Tires and Other Major Brands
- Competitive Pricing
- Road Hazard Protection Included With Each Tire**
- Convenience
- Factory Trained Technicians

Tires are an important component of your NISSAN driving experience. They provide the four points of contact between your vehicle and the road and affect acceleration, braking, cornering, load-carrying capacity, and overall handling and performance.

NISSAN engineers perform extensive tests to help determine which tires are best suited for use on NISSAN vehicles. Replacing the tires on your NISSAN with those that meet the Original Equipment specifications will help maximize your vehicle's handling, comfort and safety.



* May differ or not apply outside the United States, please inquire of your dealer.

** Excludes Medalist Brand

See your participating NISSAN dealer for details.

72,000 MILES OR 72 MONTHS

SCHEDULE 1 MAINTENANCE

- ☐ Replace engine oil and filter
- ☐ Replace engine coolant
- ☐ [Replace transmission oil]
- ☐ [Replace differential oil (front & rear)]
- ☐ Replace in-cabin microfilter
- ☐ <Replace brake fluid>
- ☐ Inspect the following:
 - ___ <Engine startability and abnormal sound>
 - ___ <Driving performance at low and accelerating speed>
 - ___ <Throttle chamber deposits>
 - ___ Axle & suspension parts
 - ___ Brake lines & cables
 - ___ Brake pads & rotors
 - ___ Engine settings^{1, 2}
 - ___ Transmission settings²
 - ___ Measurement and adjustment of wheel alignment²
 - ___ Drive shaft boots
- ___ Engine drive belts
- ___ Exhaust system
- ___ Exhaust finishers to rear bumper clearance²
- ___ Front suspension ball joints
- ___ Fuel lines/connections
- ___ Fuel tank vapor vent system hoses
- ___ Propeller shaft
- ___ Steering gear and linkage
- ___ Steering linkage ball joints
- ___ Wheel hub (to drive shaft) lock nut torque, front and rear²

SCHEDULE 2 MAINTENANCE

- ☐ Replace engine oil and filter
- ☐ Replace engine coolant
- ☐ [Replace transmission oil]
- ☐ [Replace differential oil (front & rear)]
- ☐ Replace in-cabin microfilter
- ☐ <Replace brake fluid>
- ☐ Inspect the following:
 - ___ <Engine startability and abnormal sound>
 - ___ <Driving performance at low and accelerating speed>
 - ___ <Throttle chamber deposits>
 - ___ Brake lines & cables
 - ___ Brake pads & rotors
 - ___ Engine settings^{1, 2}
 - ___ Transmission settings²
 - ___ Measurement and adjustment of wheel alignment²
 - ___ Drive shaft boots
 - ___ Engine drive belts
- ___ Exhaust system
- ___ Exhaust finishers to rear bumper clearance²
- ___ Front suspension ball joints
- ___ Fuel lines/connections
- ___ Fuel tank vapor vent system hoses
- ___ Propeller shaft
- ___ Steering gear and linkage
- ___ Steering linkage ball joints
- ___ Wheel hub (to drive shaft) lock nut torque, front and rear²

¹ Balancing of air flow for left and right banks

² If the performance optimization services at 36 months (free of charge) including this inspection have not been finished yet, this inspection is not necessary.

[]: Performed based on the mileage only.

< >: Performed based on the number of service months only.

GT-R Performance Optimization Service Log Record of Service Details

Measurement and Adjustment of wheel alignment

Measured Values

FR	Total Toe-In			in/mm
	Camber	LH		Deg/min (Dec/Deg)
		RH		Deg/min (Dec/Deg)
	Caster	LH		Deg/min (Dec/Deg)
RH			Deg/min (Dec/Deg)	
RR	Total Toe-In			in/mm
	Camber	LH		Deg/min (Dec/Deg)
		RH		Deg/min (Dec/Deg)

Adjusted Values

FR	Total Toe-In			in/mm
	Camber	LH		Deg/min (Dec/Deg)
		RH		Deg/min (Dec/Deg)
	Caster	LH		Deg/min (Dec/Deg)
RH			Deg/min (Dec/Deg)	
RR	Total Toe-In			in/mm
	Camber	LH		Deg/min (Dec/Deg)
		RH		Deg/min (Dec/Deg)

Engine Settings

Measured Values

Engine Speed	rpm
Coolant Temp.	°F (°C)
Engine Oil Temp.	°F (°C)
MAS A/F SE-B1	mV
MAS A/F SE-B2	mV
Throttle Angle-B1	deg
Throttle Angle-B2	deg

Transmission Settings

Measured Values

Engine Speed	rpm
Trans. Oil Temp.	°F (°C)

Status of Transmission Setting

Clutch Gear Learning	Previous Learned Value
	Current Learned Value

* Circle the settings as delivered to the Customer

Clutch A touch point setting value	
Clutch B touch point setting value	
Adjust clutch A capacity setting value	
Adjust clutch B capacity setting value	

Customer Name	
Address	

Mileage	Miles/km
Dealer Name	
Date	
Technician Name	

Notes

78,000 MILES OR 78 MONTHS

SCHEDULE 1 MAINTENANCE



- ☐ Replace engine oil and filter
- ☐ Inspect the following:
 - ___ Axle & suspension parts
 - ___ Brake pads & rotors
 - ___ Drive shaft boots
 - ___ Exhaust system
 - ___ Front suspension ball joints
 - ___ Propeller shaft
 - ___ Steering gear and linkage
 - ___ Steering linkage ball joints

SCHEDULE 2 MAINTENANCE



- ☐ Replace engine oil and filter

GENUINE NISSAN PARTS YOU CAN RELY ON

Wiper Blades

Genuine NISSAN Wiper Blades and Arms are designed to fit your NISSAN and can be installed by any NISSAN dealer in just minutes.



84,000 MILES OR 84 MONTHS

SCHEDULE 1 MAINTENANCE

- ☐ Replace engine oil and filter
- ☐ Replace in-cabin microfilter
- ☐ Inspect the following:
 - ___ <Engine startability and abnormal sound>
 - ___ <Driving performance at low and accelerating speed>
 - ___ <Throttle chamber deposits>
 - ___ Engine settings^{1,2}
 - ___ Transmission settings²
 - ___ Measurement and adjustment of wheel alignment²
 - ___ Axle & suspension parts
 - ___ Brake lines & cables
 - ___ Brake pads & rotors
 - ___ Differential oil (front & rear)
 - ___ Drive shaft boots
 - ___ Engine drive belts
 - ___ Exhaust system
 - ___ Exhaust finishers to rear bumper clearance²
 - ___ Front suspension ball joints
 - ___ Propeller shaft
 - ___ Transmission oil
 - ___ Steering gear and linkage
 - ___ Steering linkage ball joints
 - ___ Wheel hub (to drive shaft) lock nut torque, front and rear²

SCHEDULE 2 MAINTENANCE

- ☐ Replace engine oil and filter
- ☐ Replace in-cabin microfilter
- ☐ Inspect the following:
 - ___ <Engine startability and abnormal sound>
 - ___ <Driving performance at low and accelerating speed>
 - ___ <Throttle chamber deposits>
 - ___ Engine settings^{1,2}
 - ___ Transmission settings²
 - ___ Measurement and adjustment of wheel alignment²
 - ___ Brake lines & cables
 - ___ Brake pads & rotors
 - ___ Differential oil (front & rear)
 - ___ Drive shaft boots
 - ___ Engine drive belts
 - ___ Exhaust finishers to rear bumper clearance²
 - ___ Transmission oil
 - ___ Propeller shaft
 - ___ Wheel hub (to drive shaft) lock nut torque, front and rear²

¹ Balancing of air flow for left and right banks

² If the performance optimization services at 36 months (free of charge) including this inspection have not been finished yet, this inspection is not necessary.

< >: Performed based on the number of service months only.

GT-R Performance Optimization Service Log Record of Service Details

Measurement and Adjustment of wheel alignment

Measured Values

FR	Total Toe-In		in/mm
	Camber	LH	Deg/min (Dec/Deg)
		RH	Deg/min (Dec/Deg)
	Caster	LH	Deg/min (Dec/Deg)
		RH	Deg/min (Dec/Deg)
RR	Total Toe-In		in/mm
	Camber	LH	Deg/min (Dec/Deg)
		RH	Deg/min (Dec/Deg)

Adjusted Values

FR	Total Toe-In		in/mm
	Camber	LH	Deg/min (Dec/Deg)
		RH	Deg/min (Dec/Deg)
	Caster	LH	Deg/min (Dec/Deg)
		RH	Deg/min (Dec/Deg)
RR	Total Toe-In		in/mm
	Camber	LH	Deg/min (Dec/Deg)
		RH	Deg/min (Dec/Deg)

Engine Settings

Measured Values

Engine Speed	rpm
Coolant Temp.	°F (°C)
Engine Oil Temp.	°F (°C)
MAS A/F SE-B1	mV
MAS A/F SE-B2	mV
Throttle Angle-B1	deg
Throttle Angle-B2	deg

Transmission Settings

Measured Values

Engine Speed	rpm
Trans. Oil Temp.	°F (°C)

Status of Transmission Setting

Clutch Gear Learning	Previous Learned Value
	Current Learned Value

* Circle the settings as delivered to the Customer

Clutch A touch point setting value	
Clutch B touch point setting value	
Adjust clutch A capacity setting value	
Adjust clutch B capacity setting value	

Customer Name	
Address	

Mileage	Miles/km
Dealer Name	
Date	
Technician Name	

Notes

90,000 MILES OR 90 MONTHS

SCHEDULE 1 MAINTENANCE



- ☐ Replace engine oil and filter
- ☐ [Replace engine air filter]
- ☐ Inspect the following:
 - ___ Axle & suspension parts
 - ___ Brake pads & rotors
 - ___ Drive shaft boots
 - ___ Exhaust system
 - ___ Front suspension ball joints
 - ___ Propeller shaft
 - ___ Steering gear and linkage
 - ___ Steering linkage ball joints

SCHEDULE 2 MAINTENANCE



- ☐ Replace engine oil and filter
- ☐ [Replace engine air filter]

[]: Performed based on the mileage only.

GENUINE NISSAN PARTS YOU CAN RELY ON

In-Cabin Microfilter

The In-Cabin Microfilter filters the air you breathe in your vehicle. This system filters both outside and recirculated air used by the air conditioning system in your vehicle. Replacing the Microfilter every year or 12,000 miles is the best way to help prevent road dust, pollen and other air pollutants from entering the interior of your vehicle and the air you breathe. If your vehicle is not equipped with an In-Cabin Microfilter system – see your NISSAN dealer about getting one installed – you'll breathe easier.



New Microfilter



Requires Replacement

96,000 MILES OR 96 MONTHS

SCHEDULE 1 MAINTENANCE

- ☐ Replace engine oil and filter
- ☐ Replace engine coolant
- ☐ Replace in-cabin microfilter
- ☐ <Replace brake fluid>
- ☐ Inspect the following:
 - ___ <Engine startability and abnormal sound>
 - ___ <Driving performance at low and accelerating speed>
 - ___ <Throttle chamber deposits>
 - ___ Axle & suspension parts
 - ___ Brake lines & cables
 - ___ Brake pads & rotors
 - ___ Transmission oil
 - ___ Differential oil (front & rear)
 - ___ Drive shaft boots
 - ___ Engine drive belts
 - ___ Engine settings^{1,2}
 - ___ Transmission settings²
 - ___ Measurement and adjustment of wheel alignment²
 - ___ Exhaust system
 - ___ Exhaust finishers to rear bumper clearance²
 - ___ Front suspension ball joints
 - ___ Fuel lines/connections
 - ___ Fuel tank vapor vent system hoses
 - ___ Propeller shaft
 - ___ Steering gear and linkage
 - ___ Steering linkage ball joints
 - ___ Wheel hub (to drive shaft) lock nut torque, front and rear²

SCHEDULE 2 MAINTENANCE

- ☐ Replace engine oil and filter
- ☐ Replace engine coolant
- ☐ Replace in-cabin microfilter
- ☐ <Replace brake fluid>
- ☐ Inspect the following:
 - ___ <Engine startability and abnormal sound>
 - ___ <Driving performance at low and accelerating speed>
 - ___ <Throttle chamber deposits>
 - ___ Axle & suspension parts
 - ___ Brake lines & cables
 - ___ Brake pads & rotors
 - ___ Transmission oil
 - ___ Differential oil (front & rear)
 - ___ Drive shaft boots
 - ___ Engine drive belts
 - ___ Engine settings^{1,2}
 - ___ Transmission settings²
 - ___ Measurement and adjustment of wheel alignment²
 - ___ Exhaust system
 - ___ Exhaust finishers to rear bumper clearance²
 - ___ Front suspension ball joints
 - ___ Fuel lines/connections
 - ___ Fuel tank vapor vent system hoses
 - ___ Propeller shaft
 - ___ Steering gear and linkage
 - ___ Steering linkage ball joints
 - ___ Wheel hub (to drive shaft) lock nut torque, front and rear²

¹ Balancing of air flow for left and right banks

² If the performance optimization services at 36 months (free of charge) including this inspection have not been finished yet, this inspection is not necessary.

< >: Performed based on the number of service months only.

GT-R Performance Optimization Service Log Record of Service Details

Measurement and Adjustment of wheel alignment

Measured Values

FR	Total Toe-In		in/mm
	Camber	LH	Deg/min (Dec/Deg)
		RH	Deg/min (Dec/Deg)
	Caster	LH	Deg/min (Dec/Deg)
		RH	Deg/min (Dec/Deg)
RR	Total Toe-In		in/mm
	Camber	LH	Deg/min (Dec/Deg)
		RH	Deg/min (Dec/Deg)

Adjusted Values

FR	Total Toe-In		in/mm
	Camber	LH	Deg/min (Dec/Deg)
		RH	Deg/min (Dec/Deg)
	Caster	LH	Deg/min (Dec/Deg)
		RH	Deg/min (Dec/Deg)
RR	Total Toe-In		in/mm
	Camber	LH	Deg/min (Dec/Deg)
		RH	Deg/min (Dec/Deg)

Engine Settings

Measured Values

Engine Speed	rpm
Coolant Temp.	°F (°C)
Engine Oil Temp	°F (°C)
MAS A/F SE-B1	mV
MAS A/F SE-B2	mV
Throttle Angle-B1	deg
Throttle Angle-B2	deg

Transmission Settings

Measured Values

Engine Speed	rpm
Trans. Oil Temp.	°F (°C)

Status of Transmission Setting

	Previous Learned Value
Clutch Gear Learning	Current Learned Value

* Circle the settings as delivered to the Customer

Clutch A touch point setting value	
Clutch B touch point setting value	
Adjust clutch A capacity setting value	
Adjust clutch B capacity setting value	

Customer Name	
Address	

Mileage	Miles/km
Dealer Name	
Date	
Technician Name	

Notes

MAINTENANCE LOG

1,000 Miles Dealer Name: _____ Date: _____ Mileage: _____ Dealer _____ Stamp: _____	6,000 Miles or 6 Months Dealer Name: _____ Date: _____ Mileage: _____ Dealer _____ Stamp: _____	12,000 Miles or 12 Months Dealer Name: _____ Date: _____ Mileage: _____ Dealer _____ Stamp: _____
18,000 Miles or 18 Months Dealer Name: _____ Date: _____ Mileage: _____ Dealer _____ Stamp: _____	24,000 Miles or 24 Months Dealer Name: _____ Date: _____ Mileage: _____ Dealer _____ Stamp: _____	30,000 Miles or 30 Months Dealer Name: _____ Date: _____ Mileage: _____ Dealer _____ Stamp: _____
36,000 Miles or 36 Months Dealer Name: _____ Date: _____ Mileage: _____ Dealer _____ Stamp: _____	42,000 Miles or 42 Months Dealer Name: _____ Date: _____ Mileage: _____ Dealer _____ Stamp: _____	48,000 Miles or 48 Months Dealer Name: _____ Date: _____ Mileage: _____ Dealer _____ Stamp: _____

MAINTENANCE LOG

54,000 Miles or 54 Months Dealer Name: _____ Date: _____ Mileage: _____ Dealer Stamp: _____	60,000 Miles or 60 Months Dealer Name: _____ Date: _____ Mileage: _____ Dealer Stamp: _____	66,000 Miles or 66 Months Dealer Name: _____ Date: _____ Mileage: _____ Dealer Stamp: _____
72,000 Miles or 72 Months Dealer Name: _____ Date: _____ Mileage: _____ Dealer Stamp: _____	78,000 Miles or 78 Months Dealer Name: _____ Date: _____ Mileage: _____ Dealer Stamp: _____	84,000 Miles or 84 Months Dealer Name: _____ Date: _____ Mileage: _____ Dealer Stamp: _____
90,000 Miles or 90 Months Dealer Name: _____ Date: _____ Mileage: _____ Dealer Stamp: _____	96,000 Miles or 96 Months Dealer Name: _____ Date: _____ Mileage: _____ Dealer Stamp: _____	



Nissan, the Nissan logo, and Nissan model names are Nissan trademarks.
©2011 Nissan North America, Inc. All rights reserved.

Publication No.: MB2E 0R35U1
Printing : February 2011